

# ST PAUL'S SUITE.

(For String Orchestra.)

Cello.

GUSTAV HOLST.

## Jig

Vivace.

The musical score for the Cello part of the Jig movement is written on ten staves. The first staff begins with a treble clef, a key signature of one flat (B-flat), and a time signature of 6/8. The tempo is marked 'Vivace.' and the dynamic is 'f'. The music consists of a series of eighth-note patterns with slurs. The second staff continues the melody. The third staff is in bass clef with a dynamic of 'p'. The fourth staff continues the bass line. The fifth staff has a first ending bracket labeled '1'. The sixth staff has a second ending bracket labeled '2'. The seventh staff features a crescendo marking 'cresc'. The eighth staff has a dynamic of 'ff'. The ninth staff begins with a decrescendo marking 'dim.' and ends with a dynamic of 'p' and a key signature change to two sharps (D major).

# Cello.

3



4

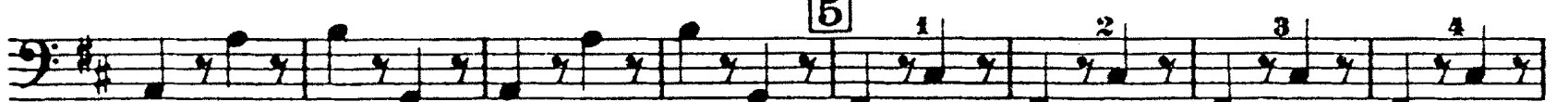


*cresc.*

*f*



5



1

2

3

4



5

6

7

8

*p*

*f*



2

3

4

5

6

*p*

6

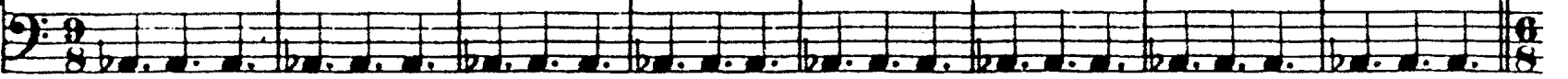


*p*



*pp*

*div. pp cresc. poco a poco*



7



*ff*



*ff*

Cello.

unis.

8

*pesante non legato*

*p cresc.*

*fff molto pesante*

9 Più mosso.

*accel.*

*p < f*

# Cello.

## Ostinato

2

Presto. con sord.  
pizz.

4

*pp*

1

2

*cresc. poco a poco*

div.

3

unis.

4 8 pizz. *p*

5 arco *f* *p*

*f* *p*

*dim.*

*pp* *ppp* pizz.

Intermezzo

3

Andante con moto (in 8 bar rhythm)

pizz. *p*

1 *f* *p*

Cello.

**2** **Vivace**  
arco

**3**

**Tempo I.**

pizz.

**5** **Vivace.**  
arco

**6**

**Tempo I.**

**Adagio**

**Tutti**  
pizz.

Cello.

Finale  
(The Dargason)

4

Allegro. 16

**1** pizz.

**2** arco

L'istesso tempo (One beat in a bar)  
(Green Sleeves)

Cello.

4 Two beats in a bar

*cresc* *f* *pesante* *cresc.*

*ff*

*ff*

*sempre ff*

*div. p cresc. poco a poco*  
*p cresc. poco a poco*

*ff*

*ff*



Cello.

*unis.*

8

9 One beat in a bar

*sempre ff*

*dim.*

10 Two beats in a bar

*p*

*pp*

10

*ff*